

# Coarse-to-fine 3D Clothed Human Reconstruction using PeeledSemantic Segmentation Context Supplementary Material

Submission Id 133

## 1.Real World Results

We show the performance of our model on real world data in the following figure.

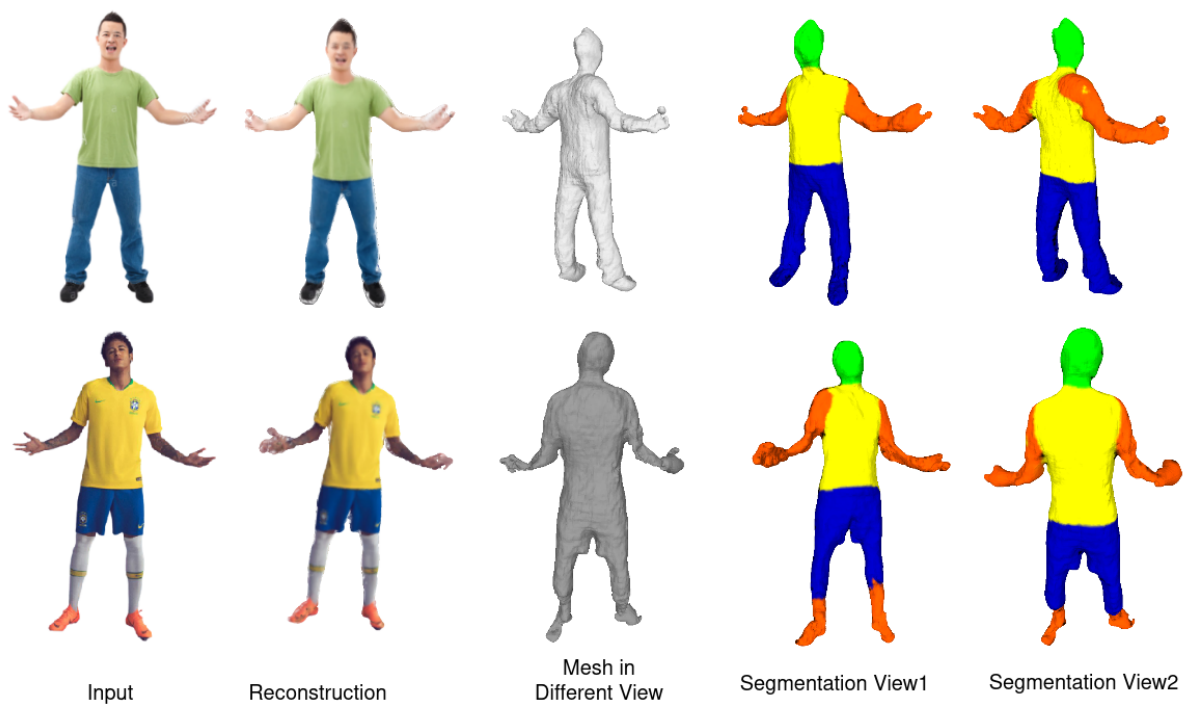
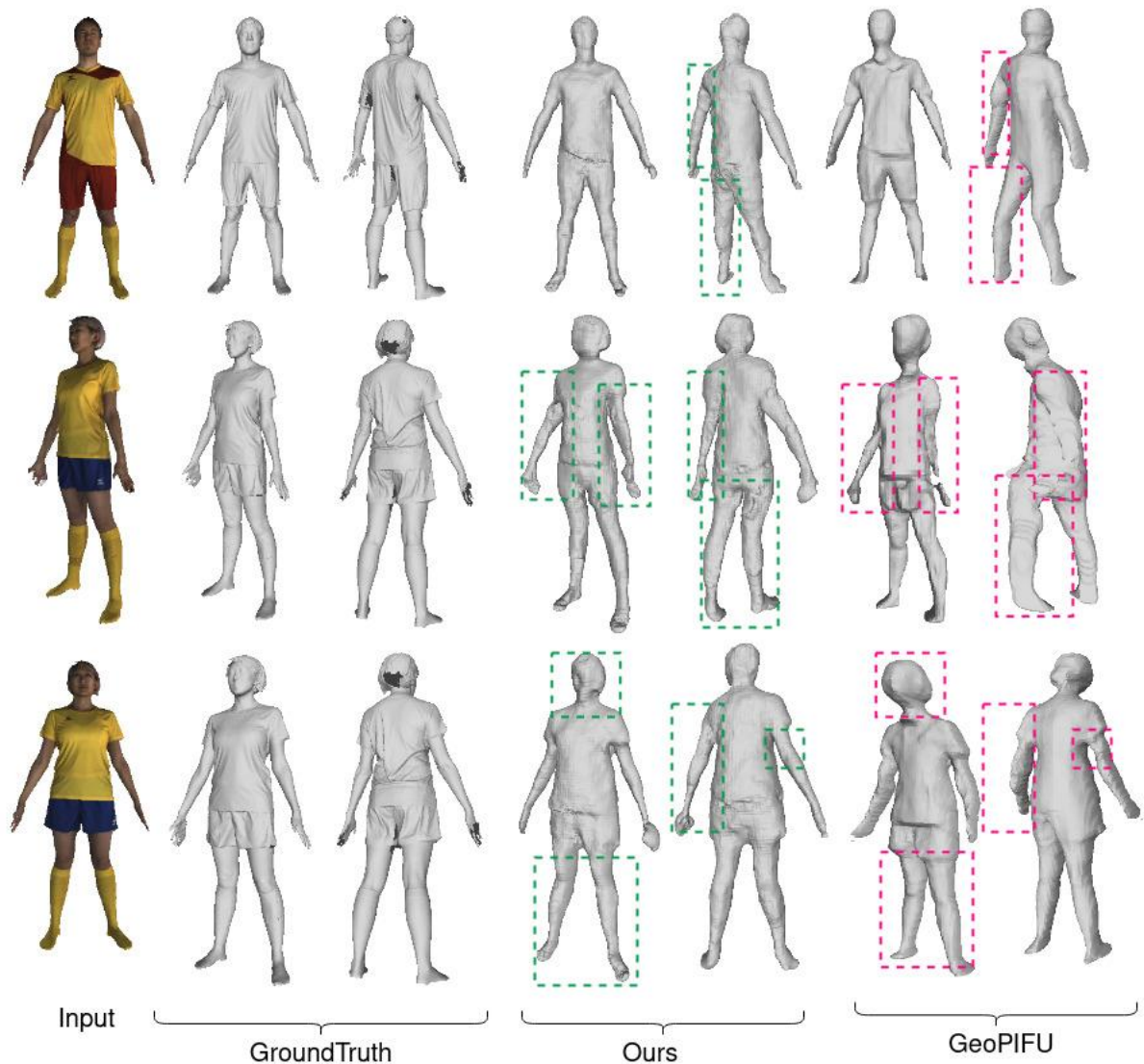


Figure:Real World Results

## 2.Generalisation

We evaluate generalisation of our model and GeoPIFu which are trained on THUman dataset and tested on unseen images.



**Figure: Generalisation of our model and GeoPIFu on unseen data**

## 2.RGB + Depth as input

We trained our model by giving first layer depth map  $D_1$  as input along with the monocular rgb image. We calculated the chamfer loss on Thuman for the same.

Chamfer Loss	0.00010
--------------	---------

We show the qualitative results with RGB + depth as input in the following figure

